



POP/IMAP Email Gateway Evaluation Guide

Configuring Isode's M-Box Server as a POP3 to IMAP Gateway

Objectives

The purpose of this guide is to assist a user in configuring the Isode M-Box server as a POP3 to IMAP gateway. In this mode email providers can add IMAP, including the LEMONADE Profile 1 features for mobile devices, to their existing POP3 only service. It can also be used as a gateway to corporate email servers such as Microsoft Exchange and IBM Lotus Notes/Domino servers as both can be configured to support the POP3 protocol. By the end of this guide you will have:

- Understood how the Isode M-Box Server operates in Gateway Mode
- Installed the Isode M-Box Server as a POP to IMAP Gateway
- Accessed an existing POP mail account using an IMAP Client

Installation Requirements

You should visit [www.isode.com/evaluate/supported-platforms.html] to discover which operating systems are supported for Isode evaluations. Evaluation downloads (excluding documentation) are held in a password-protected section of the Isode website. You will need to fill in the form located at [www.isode.com/evaluate/evalrequest.html] to apply for password access.

For the purposes of testing you will also need the following information:

POP3 Server Address	e.g. pop.myisp.com
POP3 Port Number	Typically 110
Username	e.g. my.name@myisp.com
Email Address	e.g. my.name@myisp.com
Password	e.g. mypassword
SMTP Server Address	e.g. smtp.myisp.com

Installing Isode Applications

After obtaining password access to the Isode binary files you should download and install M-Box following the instructions on the download page for your platform. The number of packages required will vary depending on platform.

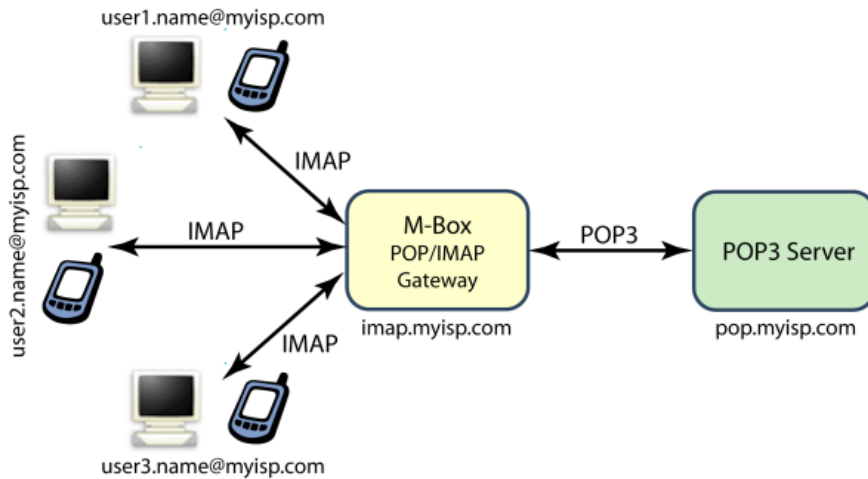
Obtain a License File

Isode products require a valid license from Isode before they will run correctly. Licenses are issued by Isode Customer Service. If you haven't already been sent a license when requesting access to the evaluation files, please send a message to request a license to [sales@isode.com] remembering to specify which Isode server products you need a license file for.

By default the license file you receive needs to be installed in "`%Isode%\etc\`" (Windows) or "`/etc/isode/`" (Linux) as `license.dat`. You may have chosen an alternative installation directory when installing the software, in which case you will have to place the license file there.

Architecture

In gateway mode the Iside M-Box server provides an IMAP front end to an existing POP3 email server so that all users on that POP3 server can access their mail using IMAP clients. The operation of the gateway is shown in the diagram below:



All mail that is downloaded from the POP3 server is left on the server for future access by POP3 clients.

Advanced configuration options also allow for designated accounts not in domains serviced by myisp.com to be accessed such as "myother.name@myotherisp.com".

Configuration

The configuration is the same for Windows, Solaris and Linux and simply requires the editing of a 'ms.conf' file, this file needs to be placed in the location specified in the table below:

Operating System	Folder
Windows	C:\Isode\etc
Linux	/etc/Isode
Solaris	/etc/Isode

The 'ms.conf' file should read:

```
<ms_options>
<!--This is the Isode M-Box (http://www.isode.com/products/m-box.html)
configuration file. See Isode M-Box manual for details on available options. This
example file is for gateway mode configuration -->
<config_location>local</config_location>
<service_group>isode.mbox</service_group>
<gateway_mode>>true</gateway_mode>
<ms_syncd_host>pop.myisp.com</ms_syncd_host>
<ms_syncd_port>110</ms_syncd_port>
<ms_sync_interval>300</ms_sync_interval>
<login_disabled>>false</login_disabled>
</ms_options>
```

Where :

- **ms_syncd_host** is your POP3 Server Hostname or IP Address
- **ms_syncd_port** is your POP3 Port Number
- **ms_sync_interval** is the value in seconds between syncs to your POP3 server

You are now ready to enable sync mode and start your server.

Starting the Server

In order to run M-Box in Gateway mode the `isode.ms_syncd` service needs to be enabled (by default it is disabled) and then M-Box itself needs to be started.

On Windows

Run the following commands from your `\Program Files\Isode\bin\` directory:

```
| mbox enable ms_syncd  
| mbox start
```

On Linux/Solaris

Edit the file `/etc/rc.d/init.d/mbox` and change the line:

```
| DAEMONS="mseventd imapd pop3d lmtpd sieved"
```

So that it reads:

```
| DAEMONS="mseventd imapd pop3d lmtpd sieved ms_syncd"
```

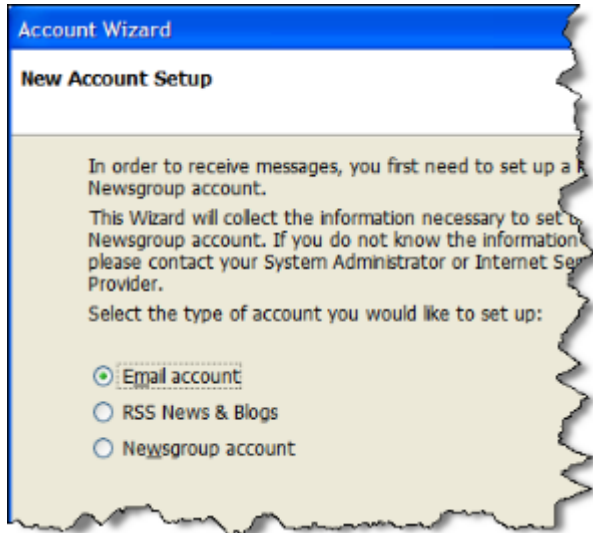
Now run the command:

```
| # /etc/rc.d/init.d/mbox start
```

Testing

In this section we'll describe how to configure Mozilla Thunderbird to Access an Account on the POP3 server using IMAP to the M-Box Gateway Server.

From the Thunderbird Main Window select 'File > New Account...'



Select the "Email Account" Radio Button, then click [Next]. Enter Your Details



In the 'Your Name' Field enter your display name as it should appear on messages that are sent by you. In the 'Email Address' Field enter the email address of the account you are going to access then click [Next]. Enter the server details:

Account Wizard

Server Information

Select the type of incoming server you are using.

POP IMAP

Enter the name of your incoming server (for example, "mail.example.net").

Incoming Server:

Check the IMAP Radio Button and in the Incoming Server Field enter the hostname of the server that the gateway is running on, then click [**Next**]. Enter your username:

Account Wizard

User Names

Enter the incoming user name given to you by your email provider (for example, "jsmith").

Incoming User Name:

In the Incoming User Name Field enter the username that you currently use to access your POP3 server. If you are asked for an Outgoing User Name enter the username you currently use to access your ISP's SMTP server (this is not always required), then click [**Next**]. Enter the Account Name:

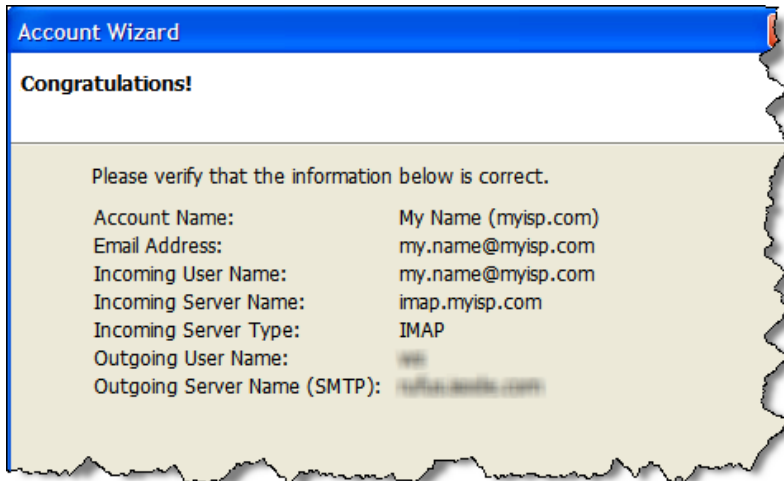
Account Wizard

Account Name

Enter the name by which you would like to refer to this account (for example, "Work Account", "Home Account" or "News Account").

Account Name:

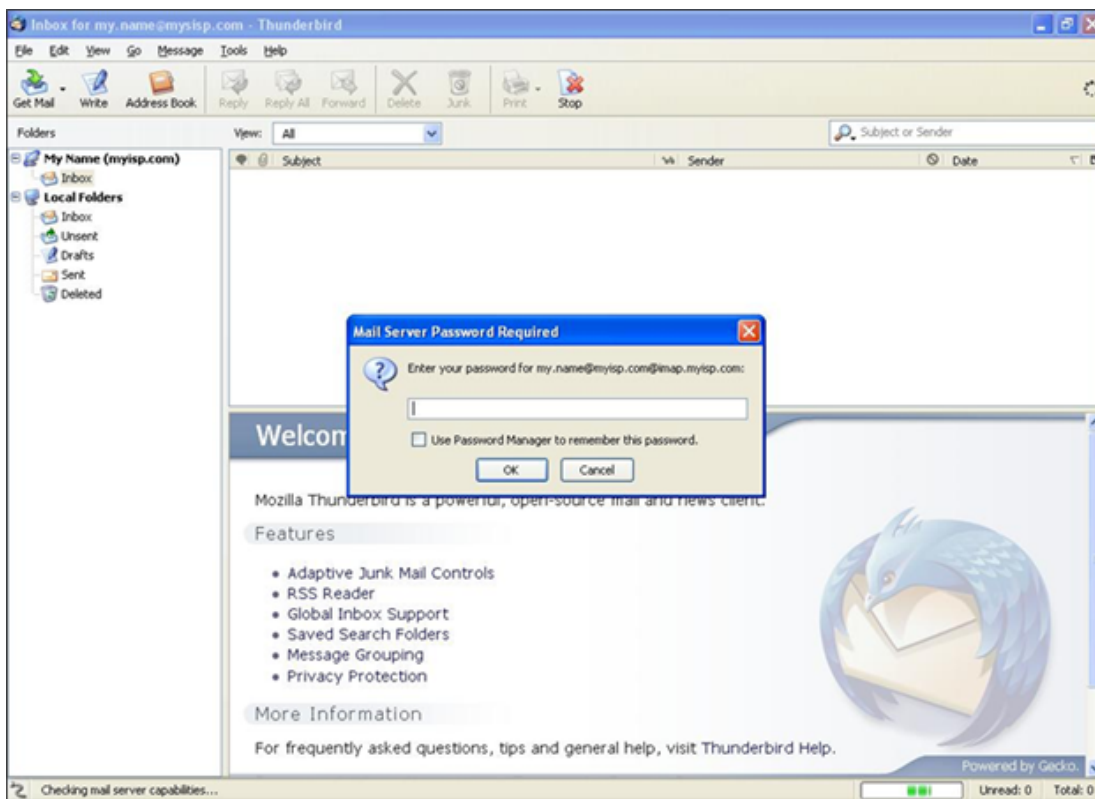
In the "Account Name" Field enter a name by which you would like this Account to be known then click [**Next**] to arrive at the Summary screen.



If everything is OK click [**Finish**].

Retrieving Mail

Selecting the Inbox of the Account will cause it to request the password.



Enter the same password that you use for the POP3 account and click OK, check the "Use Password Manager to remember the password" check box if you do not wish to enter this password each time you access this account. The messages will then be retrieved.

Advanced Configuration

As mentioned earlier you can also configure the M-Box Gateway server to access other POP3 accounts not on the defined POP3 host. This is achieved by adding a file called 'ms_sync.xml' to the location specified in the table below:

Operating System	Folder
Windows	C:\sode\etc
Linux	/etc/sode
Solaris	/etc/sode

This 'ms_sync.xml' file should read:

```
<xmldb>  
  <user frontend_id='myother.name@myotherisp.com'  
    backend_id='myother.name@myotherisp.com' host='pop.myotherisp.com'  
    port='110' />  
</xmldb>
```

Where:

- **frontend_id** = login name you wish to use for this Account
- **backend_id** = login name for this POP3 Account
- **host** = hostname or IP Address for the server that this POP3 Account is on
- **port** = port number for the server that this POP3 Account is on

What next/other resources

Help us improve our Evaluation Guides

Producing evaluation guides that are easy to follow and that help evaluators get started with our products is important to us. Please help us improve this guide by emailing us at customer-service@isode.com.

Product Information

While following this guide you have installed M-Box (POP/IMAP Message Store). For more information on this server products see [www.isode.com/products/m-box.html].

Exploring Product Capabilities

This guide has covered only one narrow functional task of M-Box. To explore the capabilities of M-Box further, you should read the relevant Administration Guide, available from the Isode website in PDF format [www.isode.com/support/docs.html].

Whitepapers

Isode regularly publishes whitepapers relevant to Internet Messaging technologies. All whitepapers can be searched from the whitepaper index page at [www.isode.com/whitepapers/index.html].

You can browse whitepapers relevant to your particular area of interest by following the links on the sub-menu on the left hand side of that page.

Copyright

The Isode Logo and Isode are trade and service marks of Isode Limited.

All products and services mentioned in this document are identified by the trademarks or service marks of their respective companies or organizations, and Isode Limited disclaims any responsibility for specifying which marks are owned by which companies or organizations.

Isode software is © copyright Isode Limited 2002-2016, All rights reserved.

Isode software is a compilation of software of which Isode Limited is either the copyright holder or licensee. Acquisition and use of this software and related materials for any purpose requires a written licence agreement from Isode Limited, or a written licence from an organization licensed by Isode Limited to grant such a licence.

This manual is © copyright Isode Limited 2016.